

# MPS4200 QUICK START GUIDE

## **STEP 1: UNPACK & INVENTORY**

When you first unpack the MPS4200, begin by inspecting and inventorying the contents of the package. If any visible damage is immediately noticed or if any contents are missing, contact Scanivalve before proceeding. Modules ship standard with:

- 1) MPS4200 Module in case
- 2) Certificate of calibration
- 3) MPS Resource Disk (USB Drive)
- 5) Power Cable with flying leads
- 6) Ethernet Cable with female RJ45

There may be other cabling or accessories included with your order.



**MPS4200 AND STANDARD ACCESSORIES**

## **STEP 2: CONNECT ETHERNET CABLE**

Connect the provided MPS Ethernet cable to the MPS Ethernet port. The cable will latch into the connector.

The standard cable provides a female RJ45 connection. This allows for a standard RJ45 Cat5e or better Ethernet cable to connect the MPS to a Ethernet hub or switch, or directly to a host computer or laptop.



**MPS4200 CABLE CONNECTIONS**

## **STEP 3: CONNECT ETHERNET CABLE**

Connect the provided MPS flying leads power cable to the MPS power port. The cable will latch into the connector. The flying leads end can be connected to a compatible DC power supply (5 to 36VDC @ 3.5W). See the wiring diagram on the right for lead connections (Red and Black).



**CAUTION**

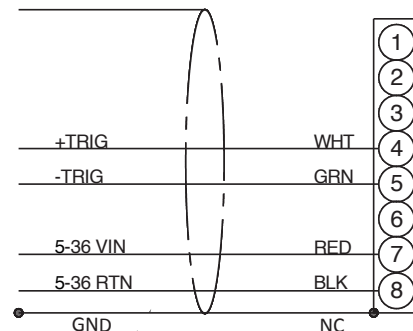
**CAUTION!** Do not make or break the power connector with power applied! Doing so risks damage to the module.

If an AC to DC power supply is provided (PDM series), connect the power cable before powering on the power supply.

Once all connections are made, apply power to the MPS and allow the module enough time to boot. The Power, Link and LAN lights should all light.

## **STEP 4: SETUP THE HOST COMPUTER**

In order to communicate with the MPS modules, the host computer must be configured to be compatible with the MPS. The default MPS4200 IP address is:



**MPS FLYING LEADS CABLE CONNECTIONS**

# MPS4200 QUICK START GUIDE

191.30.yyy.xxx

Where yyy is the family code:

**090** for MPS4264

**095** for MPS4232

**096** for MPS4216

Where xxx is the last three digits of the serial number of the module.

Configure the IP address of the host computer to be compatible with this address. One example would be:

MPS4200: 191.30.95.234

Host Computer: 191.30.95.1

Subnet: 255.255.0.0

Please consult your computer or operating system for steps on how to configure your computer's IP address.

## STEP 5: ACCESS THE MPS'S WEB SERVER

The MPS4200 has a single user web server which provides a simple method for communication, configuration and data collection from virtually any host computer. The web server has been tested with several web browsers to verify functionality and compatibility. Those that were tested are (as of 11/2024):

Mozilla Firefox

Google Chrome

Microsoft Edge

To connect to the MPS4200's web server, simply open one of the supported browsers. In the address bar, enter:

xxx.xxx.xxx.xxx <ENTER>

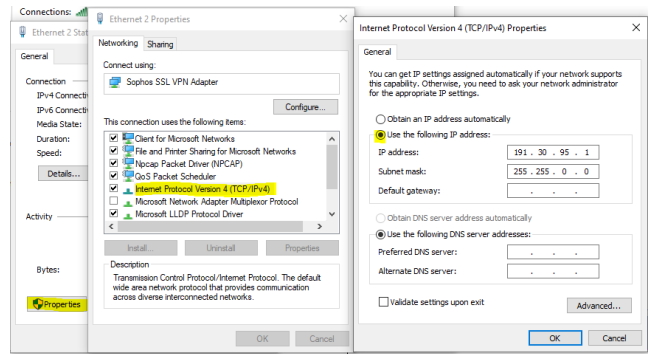
(where xxx.xxx.xxx.xxx is the IP address of the MPS)

Once connected, the web server's Scan page will be displayed.

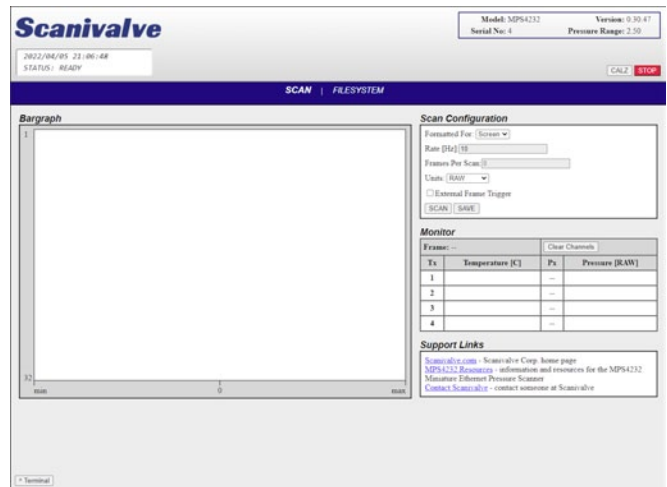
## STEP 6: SCANNING

There are multiple variables on this screen that the user may modify to adjust scan configurations. Configure a scan rate (RATE) and select an Engineering Unit (UNITS). Default settings will be loaded. Then select a format (FORMATTED FOR). The default selection is to show scan data to the screen. The user may also elect to scan to a .CSV, .TXT, or .DAT file.

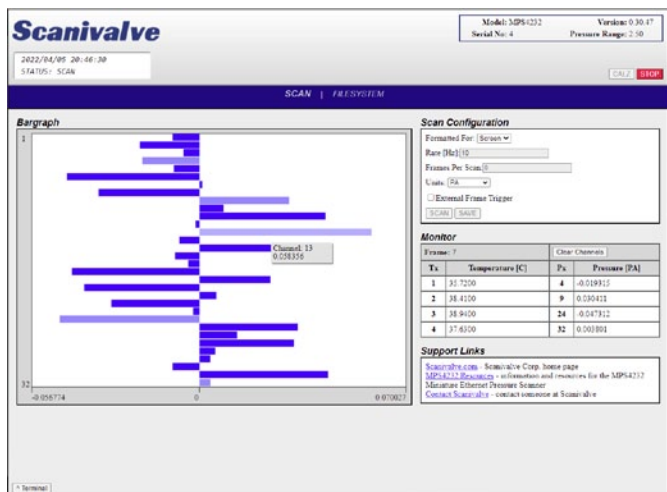
Once configured, click the CALZ button in the top right corner and wait for 10 seconds. Click the SCAN button to start data collection. If the format is set to "Screen", data will now be displayed in the bargraph area. For more options or detailed information on the web server, please see section 3 in the MPS4200 User Manual.



EXAMPLE: SETTING STATIC IP ADDRESS - WINDOWS 10



MPS'S WEB SERVER - SCAN PAGE



MPS'S WEB SERVER - SCANNING