

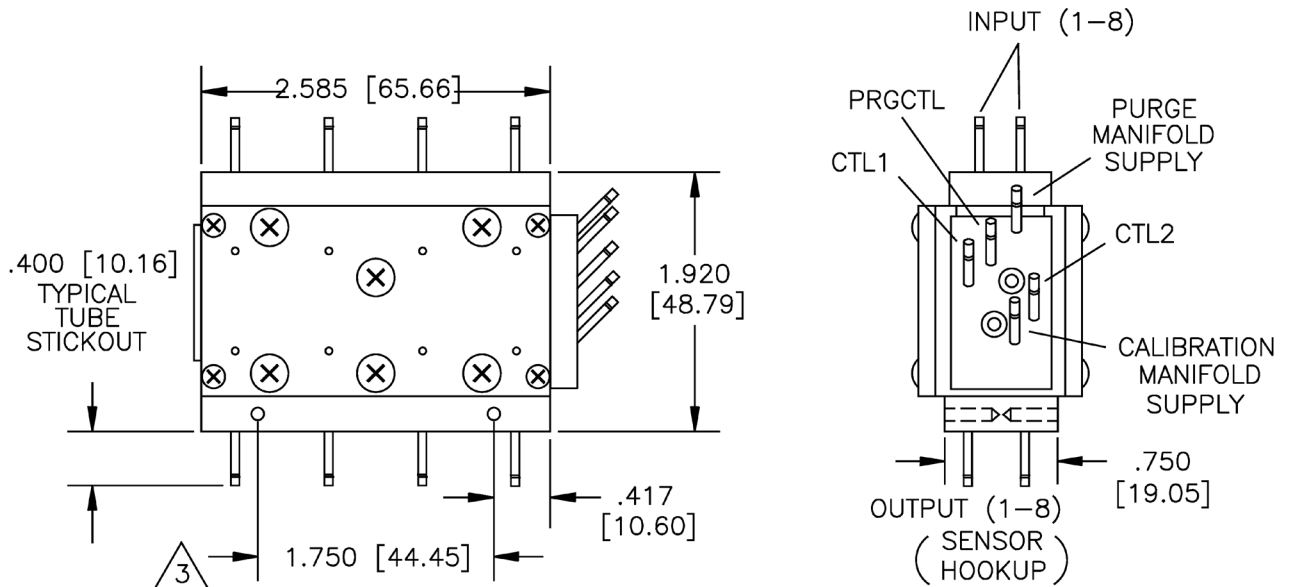
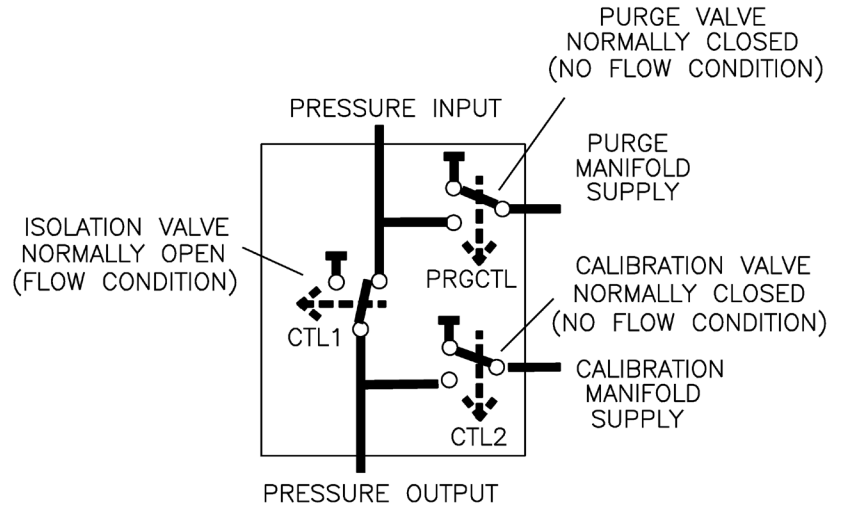
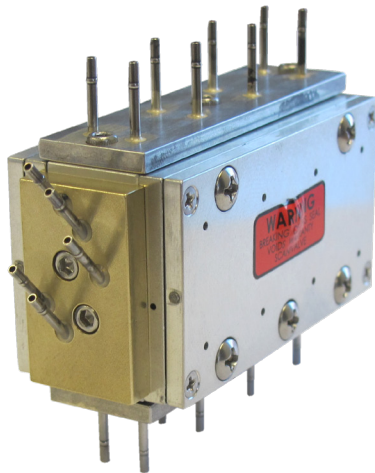
Pneumatic Calibration/Purge Valve

The pneumatic calibration/ purge valve is a 3 way, 8 channel (8P-3T) pneumatic logic valve ideal for calibrating up to 8 individual pressure transducers of similar pressure range. A 90-120 psi control pressure is required to switch the valve from the default measurement mode to the calibration, purge, or isolate mode.

Ordering Information: ZOCCAL/ADPT

In calibration mode, input pressures are isolated allowing the user to apply a calibration to the 8 ports that are now manifolded together.

The Purge mode allows a purge pressure to be input to purge condensation or contamination back through the input tubes and away from the measurement equipment.



All measurements = Inches [mm]