
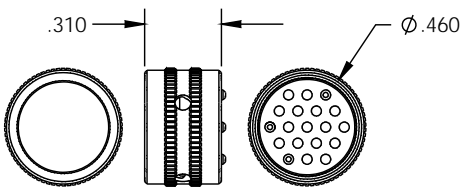
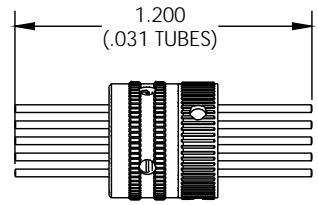
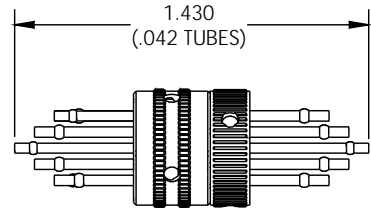


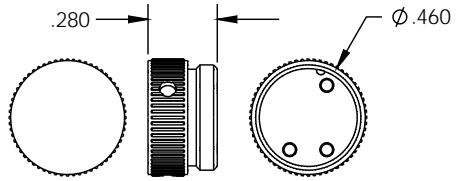
NOTES:

1. MAX PRESSURE: 100PSI
2. DIMENSIONS: INCHES
3. REFER TO PRODUCTS:
19M460 (MALE)
 50050-1 (.042)(STD)
 50050-3 (.031)
 50013-3 BLANK CAP
19F460 (FEMALE)
 50050-2 (.042)(STD)
 50050-4 (.031)
 50051-3 BLANK CAP
19FB460 (FEMALE)
 50050-5 (.042)
 WRENCH PART #50190-9
4.  WRENCH PART #50190-9
5. GASKET MATERIAL:
 50059-1 (NEOPRENE)
 50059-2 (SILICONE)-STANDARD
 50059-3 (SILICONE)-.035
 *SUPPLIED WITH MALE CONNECTOR

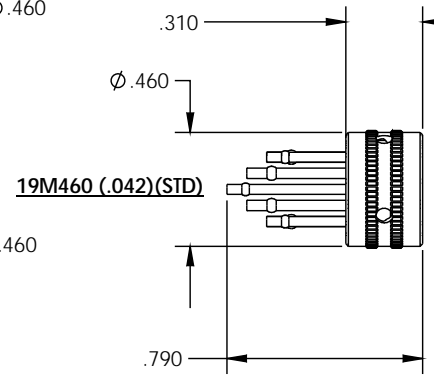
REVISIONS			
REV	DESCRIPTION	DATE	APPROVED
-	PRODUCTION RELEASE	5-21-14	BCB
A	ADDED FEMALE BULKHD	7-31-15	BCB
B	ADDED BLANK CAP	8-17-15	BCB



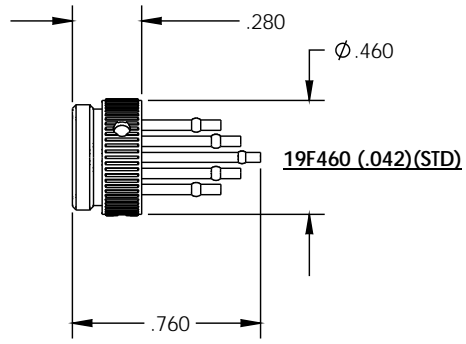
19M460 BLANK CAP



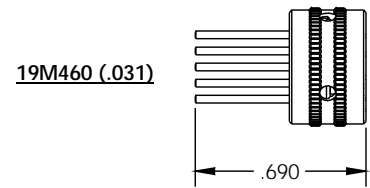
19F460 BLANK CAP



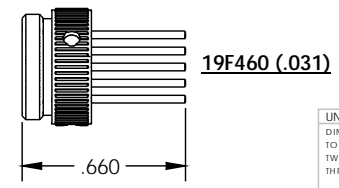
19M460 (.042)(STD)



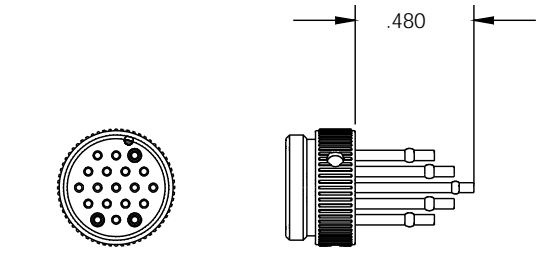
19F460 (.042)(STD)



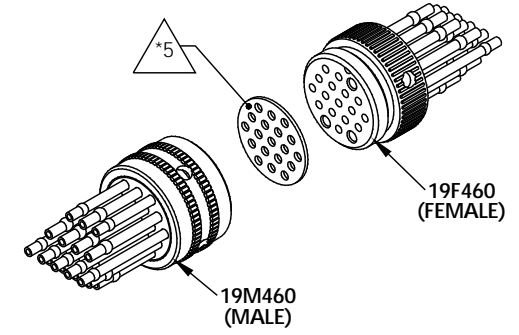
19M460 (.031)



19F460 (.031)

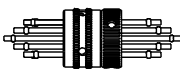


19FB460



19M460 (MALE)

19F460 (FEMALE)



**ACTUAL SIZE
(SCALE 1:1)**

-1 19 PORT CONNECTOR (19M460 / 19F460), .042 & .031 TUBE

UNLESS OTHERWISE SPECIFIED: DIMENSIONS ARE IN INCHES TOLERANCES: TWO PLACE DECIMAL ± .015 THREE PLACE DECIMAL ± .005 SHEETMETAL PARTS ± .010 BEND RADIUS .06 MAX ANGULARITY ± 1.5*		DATE	NAME	Scanivalve LIBERTY LAKE, WA	
DRAWN	8-25-15	SH	TITLE:		
CHECKED	8-25-15	BCB	ENGINEER	19 PORT CONN., .042 & .031 (19M460/19F460)	
ENGINEER	5-19-14	BCB	MODEL REV:	A	
FINISH			SIZE	DWG. NO.	REV
TOOLBOX			B	81340	B
DO NOT SCALE DRAWING		CAD: SOLIDWORKS 2014	SCALE: N/A	ERO#:	SHEET 1 OF 1