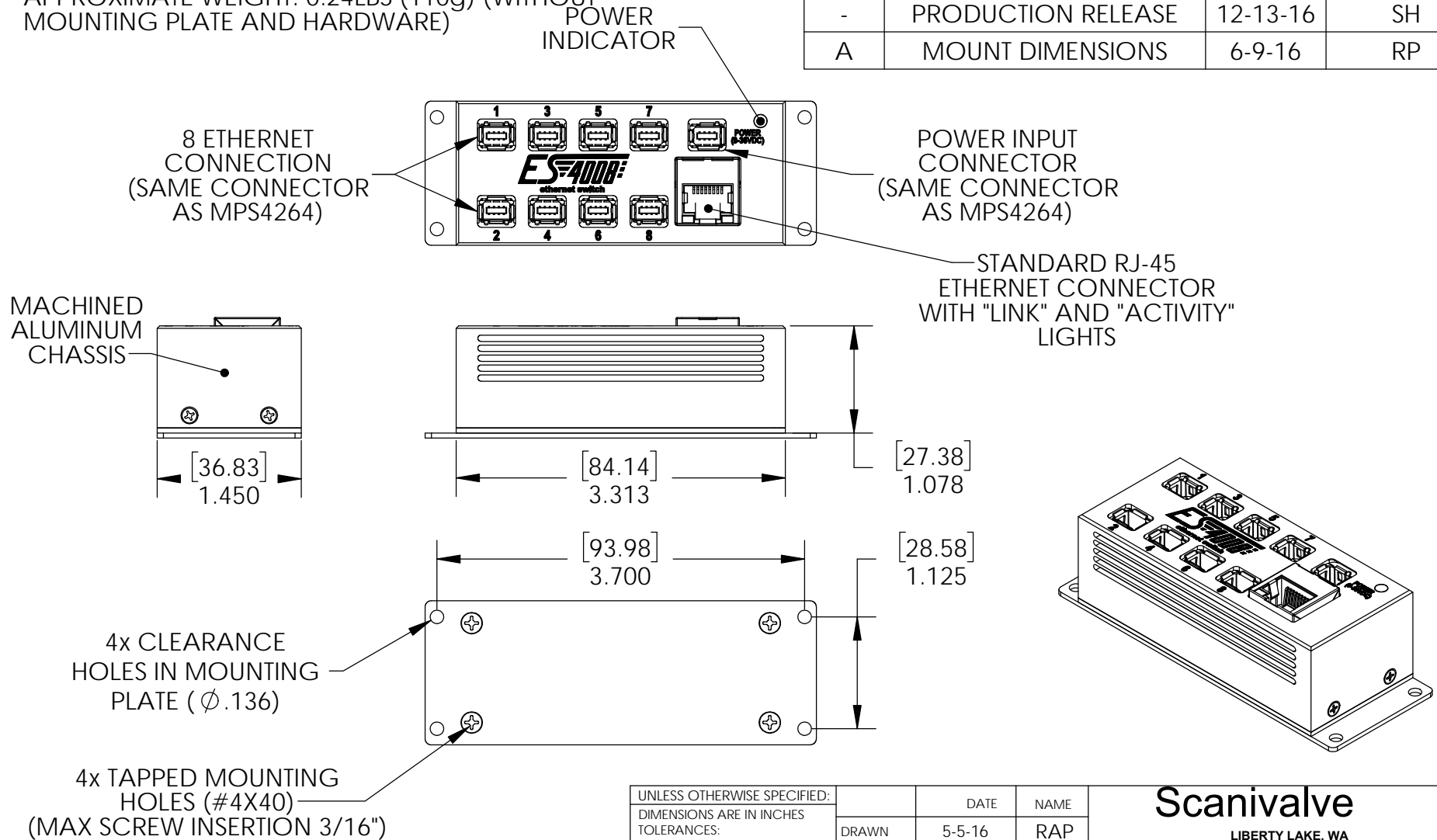


**NOTES:**

1. OPERATING POWER: 9-36VDC, 2W
2. APPROXIMATE WEIGHT: 0.24LBS (110g) (WITHOUT MOUNTING PLATE AND HARDWARE)

**REVISIONS**

REV	DESCRIPTION	DATE	APPROVED
-	PRODUCTION RELEASE	12-13-16	SH
A	MOUNT DIMENSIONS	6-9-16	RP



## **-1 ES4008 MINIATURE ETHERNET SWITCH** **OUTLINE DRAWING**

**UNLESS OTHERWISE SPECIFIED:**

DIMENSIONS ARE IN INCHES  
TOLERANCES:  
TWO PLACE DECIMAL  $\pm .015$   
THREE PLACE DECIMAL  $\pm .005$

SHEETMETAL PARTS  $\pm .010$   
BEND RADIUS .06 MAX  
ANGULARITY  $\pm 1.5^\circ$

VALUED CUSTOMER:

CUSTOMER APPROVAL:

DATE

NAME

DRAWN

5-5-16

RAP

CHECKED

5-5-16

RAP

ENGINEER

5-5-16

RAP

# Scanivalve

LIBERTY LAKE, WA

TITLE:

ES4008 MINIATURE ETHERNET  
SWITCH OUTLINE DRAWING

SIZE

A

DWG. NO.

80140

REV

A

DO NOT SCALE DRAWING

CAD: SOLIDWORKS 2016

SCALE: 2:3

ERO#: A-976

SHEET 1 OF 1