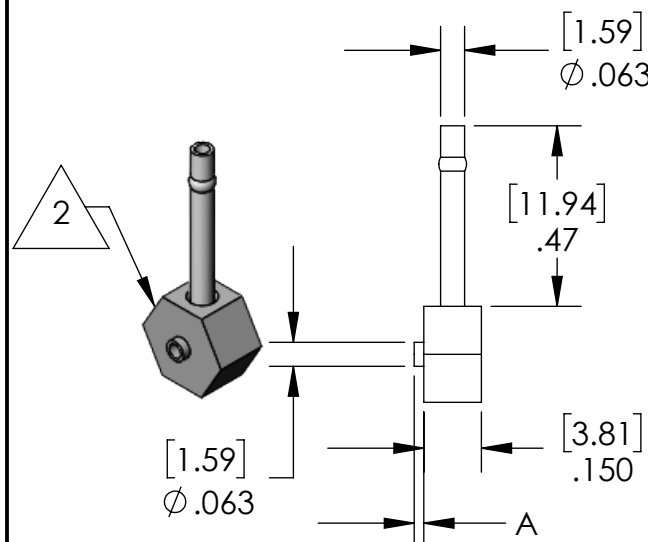
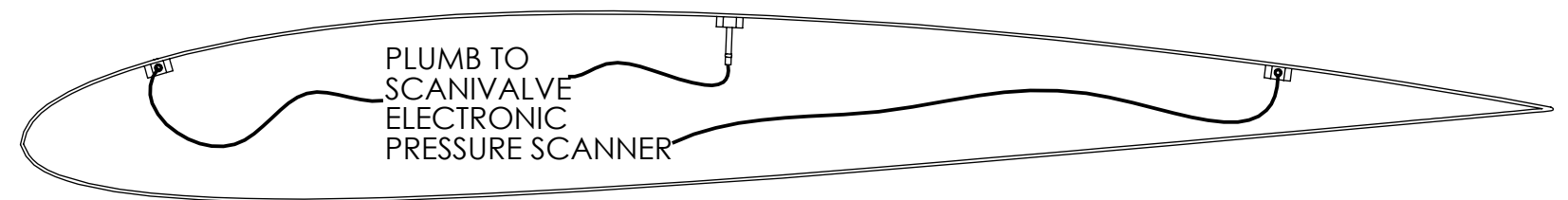
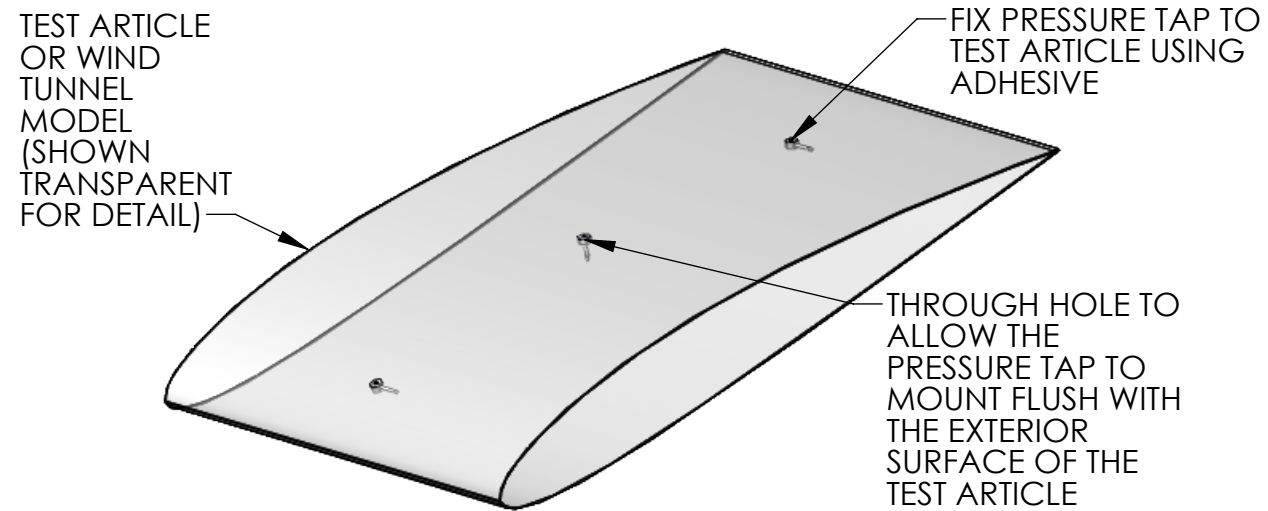


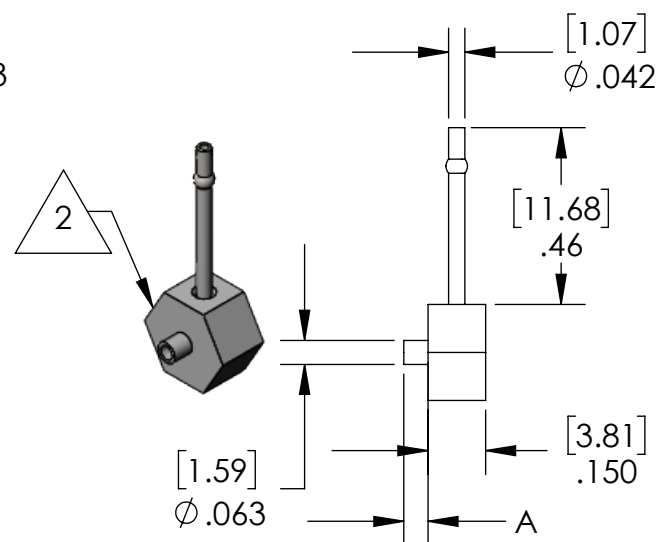
NOTES:

1. DIMENSIONS ARE IN INCHES [MILLIMETERS].
2. ALUMINUM BODY MADE FROM .25" [6.35 MM] HEX.
3. INSTALL PRESSURE TAP INTO MODEL OR TEST ARTICLE USING ADHESIVE.
4. OPERATING TEMPERATURE: -60°C TO 125°C (TYPICAL).
5. OPERATING PRESSURE: 0 TO 200PSID (TYPICAL).
6. REF SCANIVALVE TUBING DRAWING 9489-1.
7. CONTACT SCANIVALVE FOR ELECTRONIC PRESSURE SCANNER OR ADHESIVE RECOMMENDATIONS.

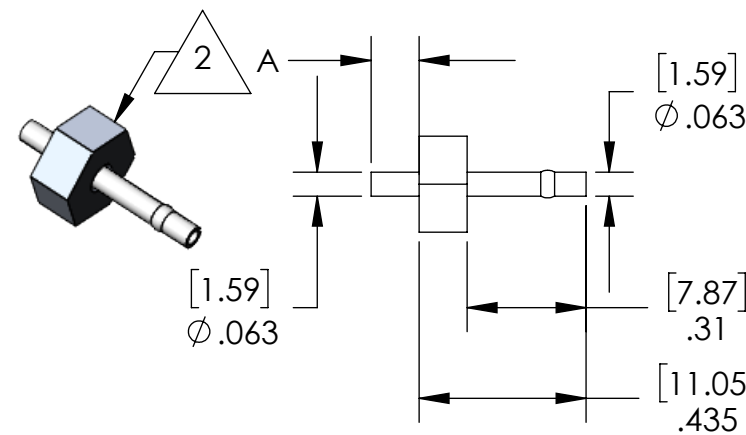
REVISIONS			
REV	DESCRIPTION	DATE	APPROVED
-	INITIAL RELEASE	3-21-19	AA



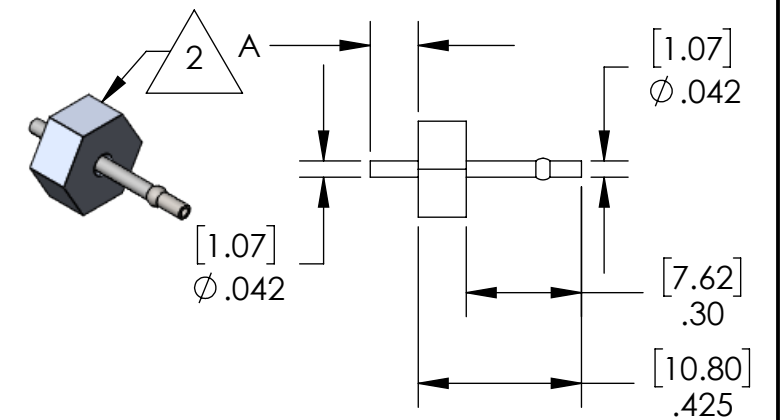
**5866-1~6
PRESSURE TAP 90° 0.063"**



**5865-1~6
PRESSURE TAP 90° 0.042"**



**5856-1~6
PRESSURE TAP STRAIGHT 0.063"**



**5855-1~6
PRESSURE TAP STRAIGHT 0.042"**

	-1	-2	-3	-4	-5	-6
'A'	.025" [.635]	.032" [.813]	.050" [1.27]	.063" [1.60]	.093" [2.36]	.125" [3.18]

PRESSURE TAP OUTLINE DRAWING

UNLESS OTHERWISE SPECIFIED: DIMENSIONS ARE IN INCHES TOLERANCES: TWO PLACE DECIMAL ± .015 THREE PLACE DECIMAL ± .005 SHEETMETAL PARTS ± .010 BEND RADIUS .06 MAX ANGULARITY ± 1.5°	DRAWN	DATE	NAME	 LIBERTY LAKE, WA TITLE: PRESSURE TAP OUTLINE DRAWING SIZE B DWG. NO. 80057 REV - SCALE: N/A ERO#: SHEET 1 OF 1
	CHECKED	01-23-19	AA	
	ENGINEER	01-23-19	RP	
VALUED CUSTOMER:				
CUSTOMER APPROVAL:			DATE:	
DO NOT SCALE DRAWING		CAD: SOLIDWORKS 2018		