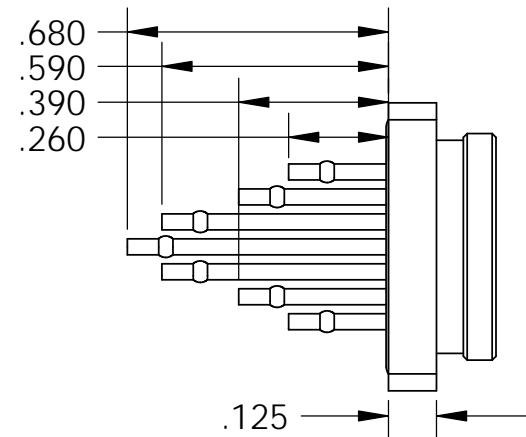
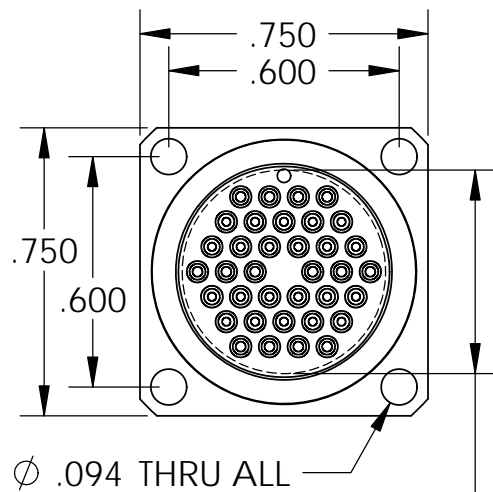
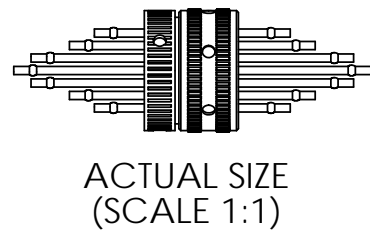
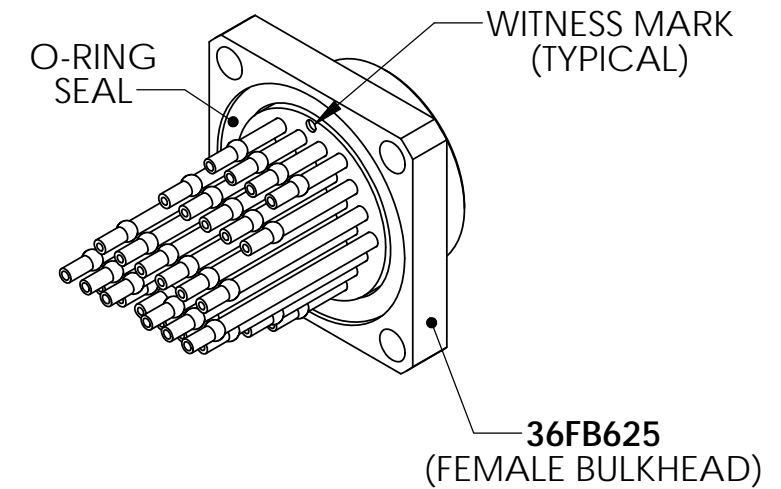
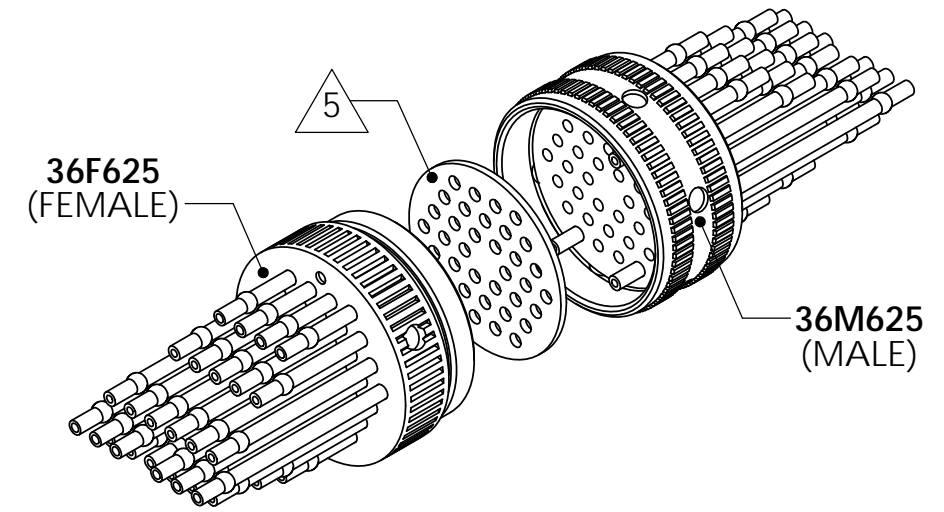
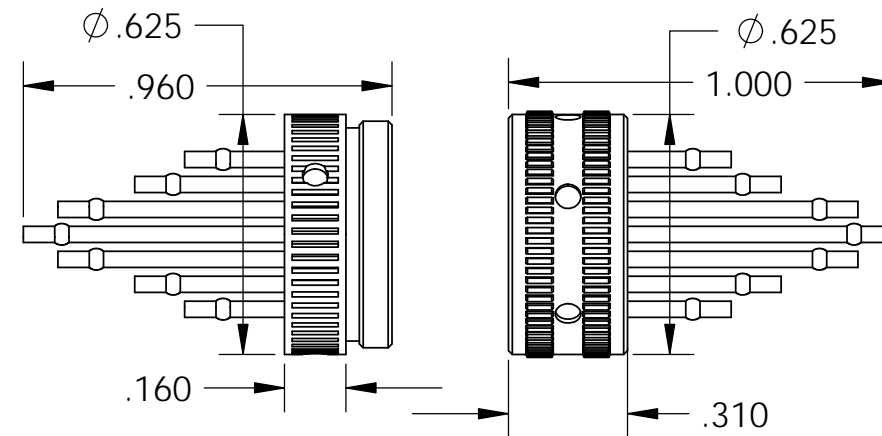
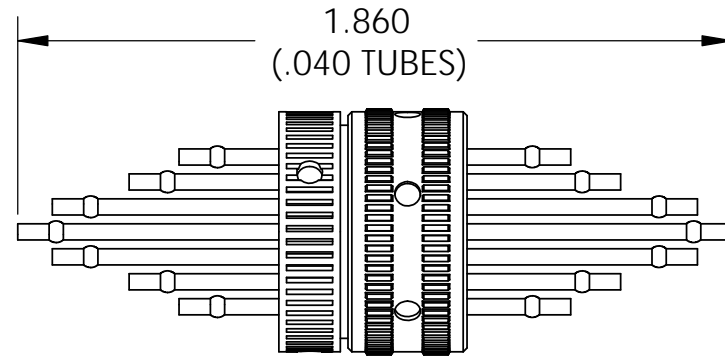
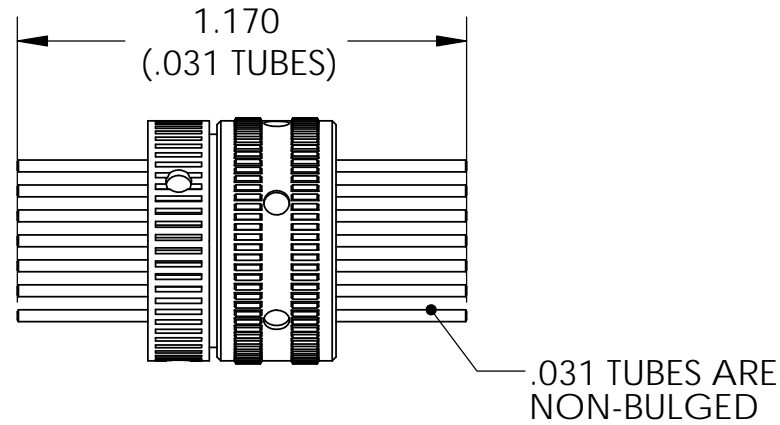


NOTES:

1. MAX PRESSURE: 100PSI
2. DIMENSIONS: INCHES
3. REFER TO PRODUCTS:
36M625
 50770-1 (.040)
 50770-2 (.031)
36F625
 50775-1 (.040)
 50775-2 (.031)
36FB625
 50780-1 (.040)
 50780-2 (.031)
4. WRENCH PART #50190-8
5. GASKET MAT'L:
 SILICONE - STANDARD
 NEOPRENE - UPON REQUEST
 REF: PART# 50778-X



ϕ .530 RECOMMENDED
PANEL HOLE SIZE

-1 36 PORT CONNECTOR (36M625/36F625), .040 & .031 TUBE

UNLESS OTHERWISE SPECIFIED:		DATE	NAME	Scanivalve Corp. LIBERTY LAKE, WA
DIMENSIONS ARE IN INCHES	DRAWN	9-16-10	BCB	
TOLERANCES:	CHECKED	9-16-10	AE	
TWO PLACE DECIMAL \pm .015	ENGINEER	9-16-10	BCB	
THREE PLACE DECIMAL \pm .005		9-16-10		TITLE:
SHEETMETAL PARTS \pm .010				36 PORT CONN., .040 & .031 (36M625 / 36F625)
VALUED CUSTOMER:	CUSTOMER APPROVAL:			SIZE
		DATE:		B
				DWG. NO.
				81257
				REV
				00
DO NOT SCALE DRAWING	CAD: SOLIDWORKS 2009	SCALE: 2:1	ERO#: A-786	SHEET 1 OF 1