

SENSOR REPLACEMENT UTILITY

SOFTWARE MANUAL
VERSION 1.01

Scanivalve

PREFACE

TRADEMARKS ® AND COPYRIGHTS ©

Scanivalve is a registered trademark of Scanivalve Corporation.

All other brand and product names are trademarks or registered trademarks of their respective companies.

IMPORTANT NOTICE

Please note that the product specifications and other information contained in this manual are subject to change without notice. Scanivalve Corporation makes an effort and strives to provide complete and current information for the proper use of the equipment. If there are any questions regarding this manual or the proper use of the equipment, contact Scanivalve Corporation.

CONTACT INFORMATION

If there are any questions or concerns regarding any Scanivalve product please do not hesitate to contact us at the following:

Scanivalve Corp.
1722 N. Madson Street
Liberty Lake, WA 99019
Telephone: (800)935-5151 (509)891-9970
Fax: (509)891-9481
scanco@scanivalve.com
www.scanivalve.com

Scanivalve Corporation is an ISO9001:2008 certified company.

TABLE OF CONTENTS

PREFACE	IV
Trademarks ® and Copyrights ©	iv
Important Notice	iv
Contact Information	iv
SECTION 1: INTRODUCTION	2
Overview	2
System Requirements	2
Installation	2
SECTION 2: OPERATION	3
Getting Started	3
Creating a Sensor Profile File (.spf)	5
Uploading a Sensor Profile File (.spf)	6
APPENDIX A - SAMPLE SENSOR PROFILE FILE (.SPF)	7

SECTION 1: INTRODUCTION

OVERVIEW

The Sensor Replacement Utility was developed as an easy to use method to move sensor coefficients. It is compatible with:

- DSA3007
- DSA3207
- DSA3307
- DSA3017
- DSA3018
- DSA3217
- DSA3218
- DSA3016
- ZOC17
- ZOC22
- ZOC23
- ZOC33

The software is designed to upload and download Sensor Profile Files (.spf files).

SYSTEM REQUIREMENTS

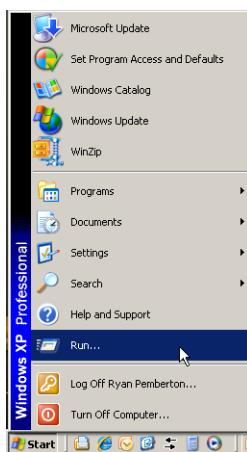
Windows XP SP3 or Windows 7
Pentium IV or better processor
512 Mb RAM
Microsoft Framework.net V2.0 or higher*

*.NET Framework is available as a free download from Microsoft

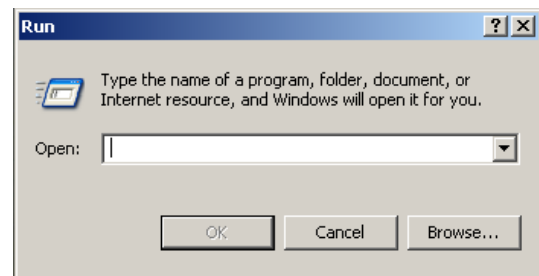
INSTALLATION

To install the software,

1. Place the installation CD in a CD or DVD drive



2. Click **Start**, then **Run**.
3. Select **Browse**.



4. Open the drive where the CD is installed, highlight **Setup.exe** and click **Open**.
5. Click **OK** in the 'Run' window to begin the installation.
6. Follow the on screen prompts to complete the installation.

If the Sensor Replacement Utility has been downloaded from the Scanivalve website, unzip the file and double-click the **Setup.exe** file. Follow the on screen prompts to complete the installation.

SECTION 2: OPERATION

GETTING STARTED

The main window of the Sensor Replacement Utility can be seen in “Figure 2.1 - Main window”. It is made up of the menus across the top in traditional Windows format, the IP Address field, the Module Position field, Sensor Position field and the status panel.

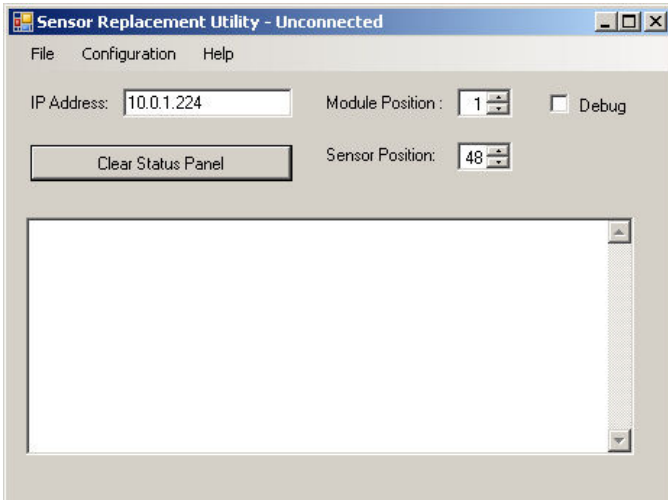


FIGURE 2.1 - MAIN WINDOW

Under the **File** menu (“Figure 2.2 - File Menu”) are three options:

- ‘**Create SPF...**’ - This option downloads coefficients from a specified channel of a specified module and creates a Sensor Profile File (.spf).
- ‘**Open SPF...**’ - This option uploads a Sensor Profile File (.spf) to the specified channel of a specified module.
- ‘**Exit**’ - This option closes the Sensor Replacement Utility.

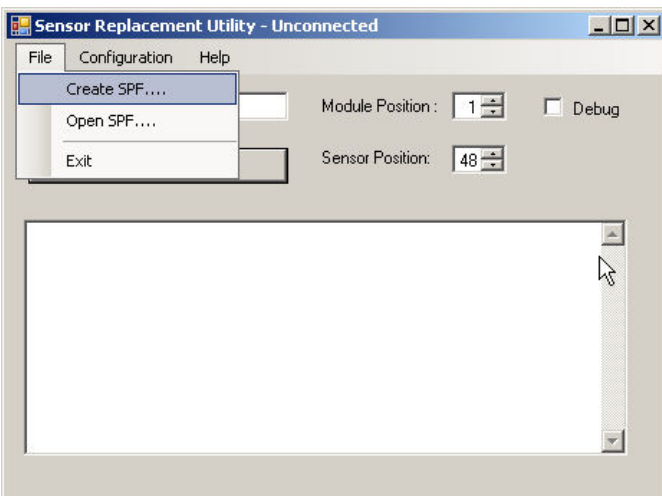


FIGURE 2.2 - FILE MENU

Under the **Configuration** menu (“Figure 2.3 - Configuration window”) are three options:

- ‘**DSA**’ - This option configures the Sensor Replacement Utility for communications with DSA series modules.
- ‘**Enclosure**’ - This option configures the Sensor Replacement Utility for communications with DSAENCL, rack mounted data systems. The Module Position field will be enabled when this option is selected.
- ‘**DSM/RAD**’ - This option configures the Sensor Replacement Utility for communications with either DSM or RAD series data acquisition systems. The Module Position field will be enabled when this option is selected.

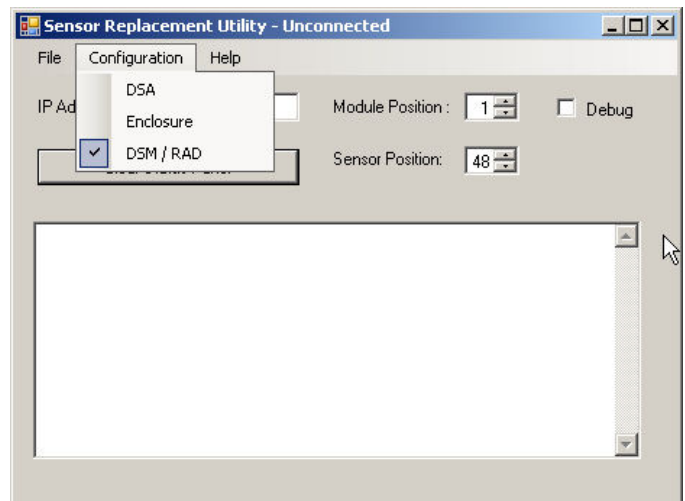


FIGURE 2.3 - CONFIGURATION WINDOW

The **Help** menu (“Figure 2.4 - Help Menu”) provides one option:

- ‘**About**’ - This option provides basic information about the Sensor Replacement Utility including the software version.

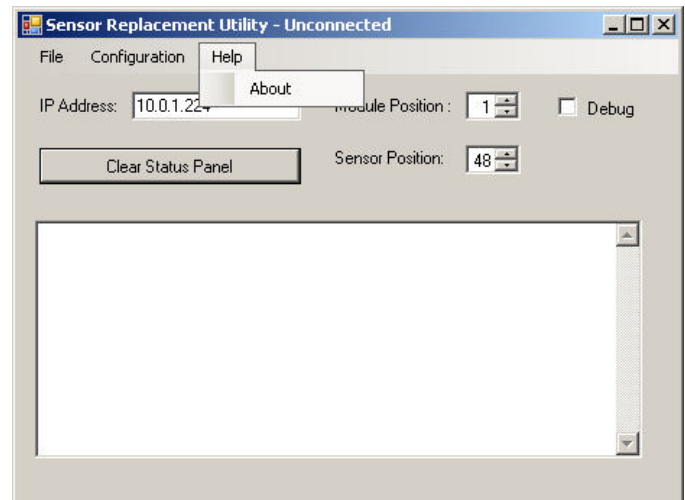


FIGURE 2.4 - HELP MENU

The **IP Address** field (“Figure 2.5 - IP Address Field”) is a configurable field used to define the IP Address of the module being communicated with. Simply enter the IP Address of the module being communicated with before attempting to establish a connection.

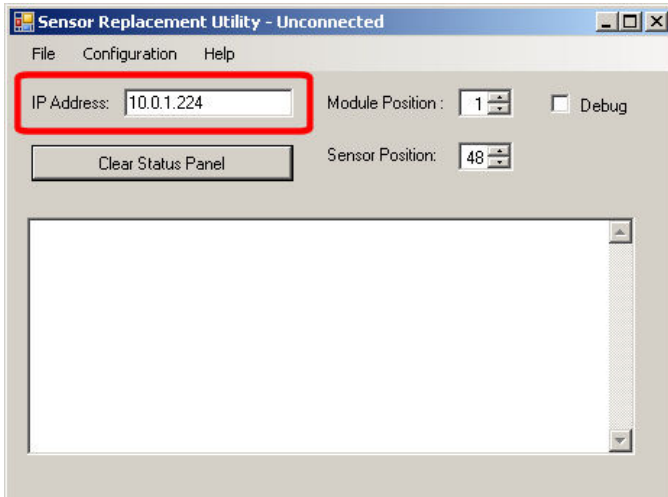


FIGURE 2.5 - IP ADDRESS FIELD

The **Module Position** field (“Figure 2.6 - Module Position Field”) is a configurable field used to define the module number that the Sensor Profile File (.spf) will be uploaded to or downloaded from. This field is only activated when ‘Enclosure’ or ‘DSM/RAD’ option is selected in the configuration drop-down. The module position can be changed by either clicking the up and down arrows or manually entering the desired channel.

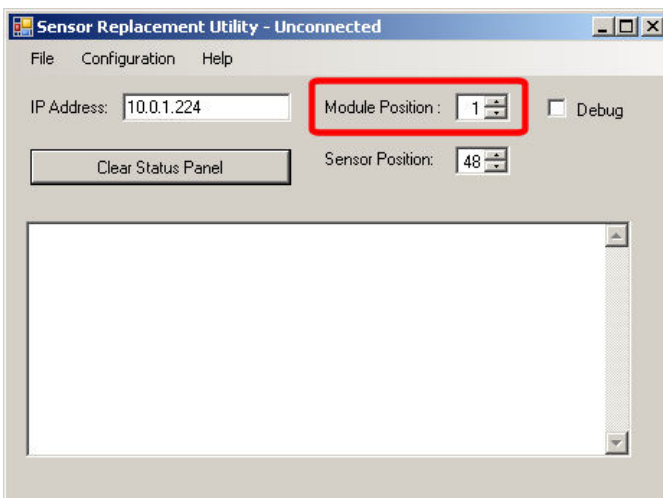


FIGURE 2.6 - MODULE POSITION FIELD

The **Sensor Position** field, (“Figure 2.7 - Sensor Position”) is a configurable field used to define the position that the Sensor Profile File (.spf) will be uploaded or downloaded from. The numbering used in this field starts at 1*. The sensor position can be changed by either clicking the up and down arrows or manually entering the desired channel.

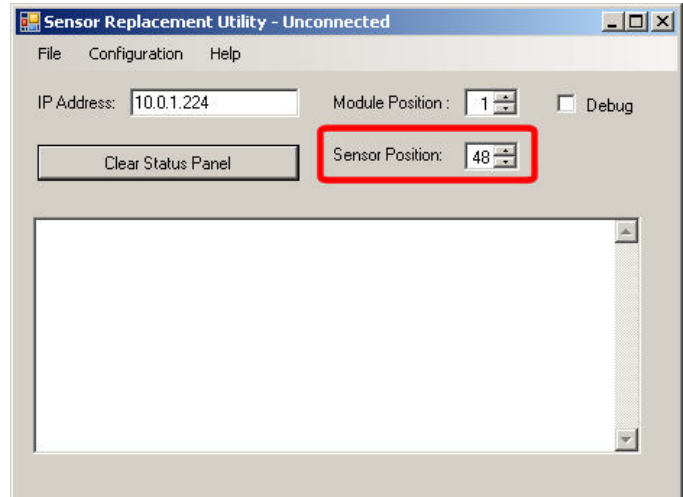


FIGURE 2.7 - SENSOR POSITION

The **Status Panel** (“Figure 2.8 - Status Panel”) is a text window on the main screen that displays information about the configuration and activity during a Sensor Profile File (.spf) creation or upload. The text in the **Status Panel** is not editable, however it can be selected, copied and pasted into a text document for review or archiving.

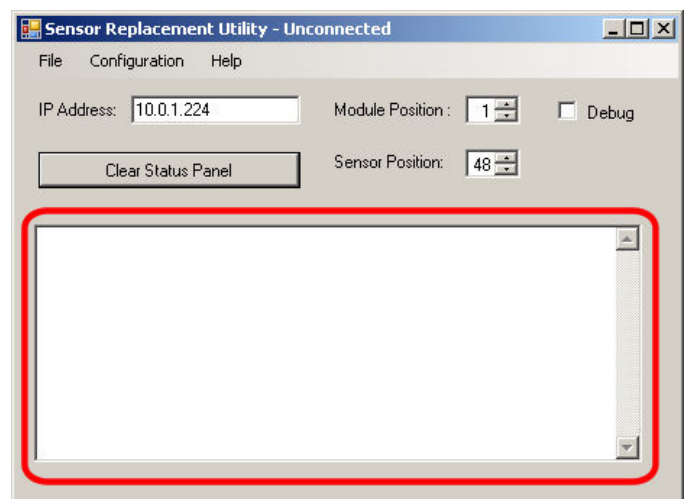


FIGURE 2.8 - STATUS PANEL

*NOTE: DSA, ENCL, DSM and RAD software references channels starting with 0, while the hardware is numbered starting with 1. The Sensor Replacement Utility uses 1-X numbering.

The **'Clear Status Panel'** button ("Figure 2.9 - Clear Status Panel Button") is located above the **Status Panel**. When clicked, all text displayed in the **Status Panel** is cleared. The data displayed in the **Status Panel** can very quickly become cluttered and difficult to sort through, this feature makes it very easy to eliminate unwanted data.

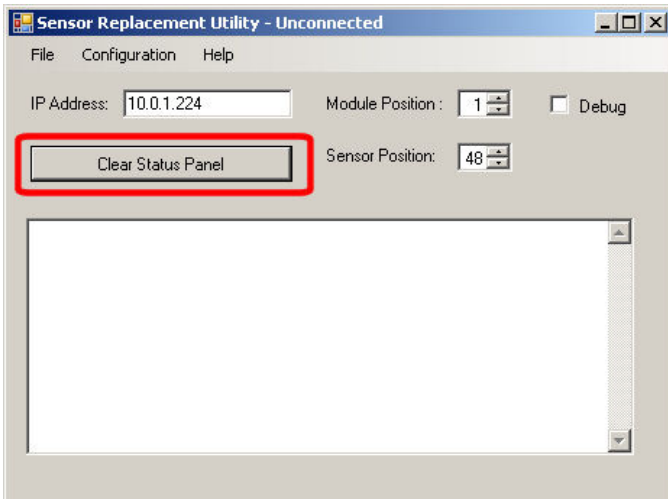


FIGURE 2.9 - CLEAR STATUS PANEL BUTTON

The **Debug** option ("Figure 2.10 - Debug Option") either enables or disables additional debug information to be printed to the status panel. This information is not needed for most applications however it provides useful information when trying to understand problems with the software.

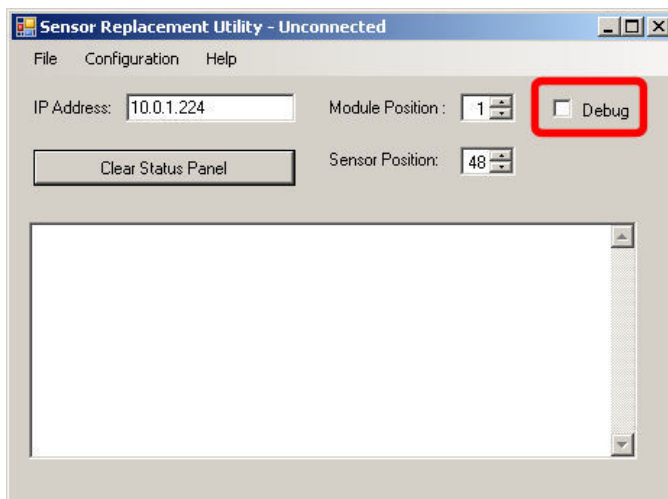


FIGURE 2.10 - DEBUG OPTION

CREATING A SENSOR PROFILE FILE (.SPF)

The ability to create a Sensor Profile File (.spf) is used when a sensor is being moved from one position to another. This can also be done between modules. The procedure for removing and replacing sensors is covered in detail in the appropriate DSA and ZOC hardware manuals. Take great care with this procedure as damage can easily be done to the sensor and/or the module. It is recommended before moving a sensor from one module to the next you contact Scanivalve Corp. to confirm compatibility.

Before removing the sensor from the original module, a Sensor Profile File (.spf) should be created. The .spf file contains all of the sensor's unique calibration coefficients as well as it's associated configuration variables.

Begin by configuring the Sensor Replacement Utility.

1. Under the **Configuration** drop-down, select the type of equipment you will be communicating with.
2. Enter the IP Address of the module in the **IP Address** field*.
3. If working with a Enclosure, DSM or RAD, select the position of the appropriate module in the **Module Position** field.
4. Select the sensor position (channel number) in the **Sensor Position** field.
5. Enable or disable the **'Debug'** function as desired.
6. Under the **'File'** menu, select **'Create SPF...'**.

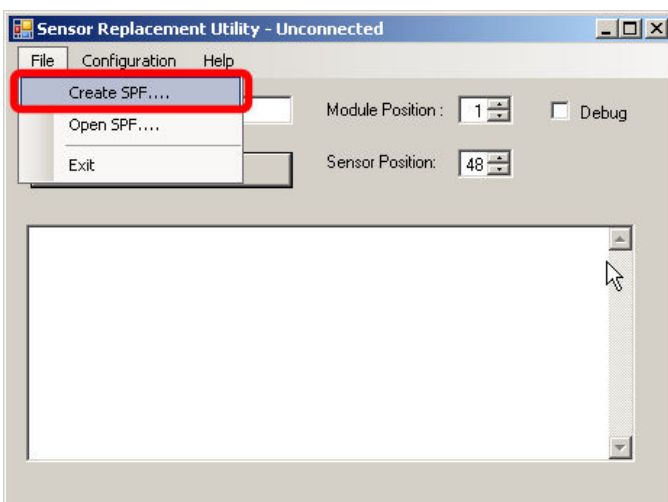


FIGURE 2.11 - CREATE SPF

7. A window will open to allow you to input the desired name of the Sensor Profile File (.spf) to be created. Navigate to the desired directory where the .spf file will be created, then put the desired file name of the .spf file in the **'File Name'** field.
8. Click **'Save'** and the Sensor Replacement Utility will create the Sensor Profile File (.spf) in the specified location.

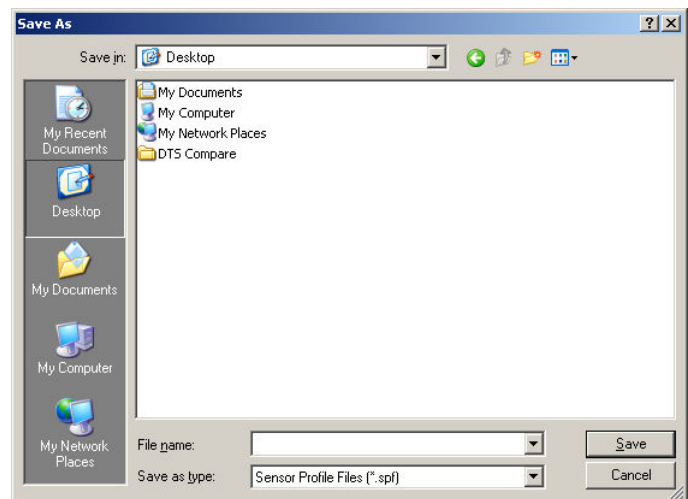


FIGURE 2.12 - SAVE .SPF FILE

9. Navigate to the specified directory and confirm that the Sensor Profile File (.spf) was successfully created.

A Sensor Profile File (.spf) can be opened and viewed using any text editor such as Notepad or Microsoft® Word.

*NOTE: Ensure that the IP Address of the module is compatible with the IP Address of the host computer. For more information on this, contact Scanivalve.

UPLOADING A SENSOR PROFILE FILE (.SPF)

When a sensor is relocated in a module or a new sensor is installed, the unique calibration coefficients associated with the sensor need to be uploaded to the module. The Sensor Profile File (.spf) contains all of these unique calibration coefficients as well as the configuration variables associated with the sensor.

All replacement sensors are delivered from Scanivalve with the associated Sensor Profile File (.spf). If the sensor is being removed from another module, the Sensor Profile File (.spf) can also be created from the old module before the sensor is removed using the Sensor Replacement Utility. See the “Creating a Sensor Profile File (.spf)” on page 6 of this manual for more information on creating .spf files.

To upload a Sensor Profile File (.spf), begin by configuring the Sensor Replacement Utility software:

1. Under the **Configuration** drop-down, select the type of equipment you will be communicating with.
2. Enter the IP Address of the module in the **IP Address** field*.
3. If working with a Enclosure, DSM or RAD, select the position of the appropriate module in the **Module Position** field.
4. Select the sensor position (channel number) in the **Sensor Position** field.
5. Enable or disable the **‘Debug’** function as desired
6. Under the **‘File’** menu, select **‘Open SPF...’**.

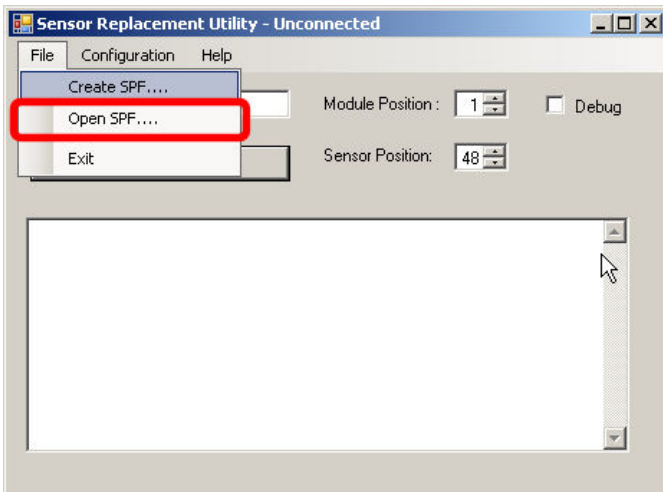


FIGURE 2.13 - OPEN SPF

7. A window will open to allow you to select the desired Sensor Profile File (.spf) to be uploaded. Select **‘Open’** to begin uploading the Sensor Profile File (.spf) to the DSA module.

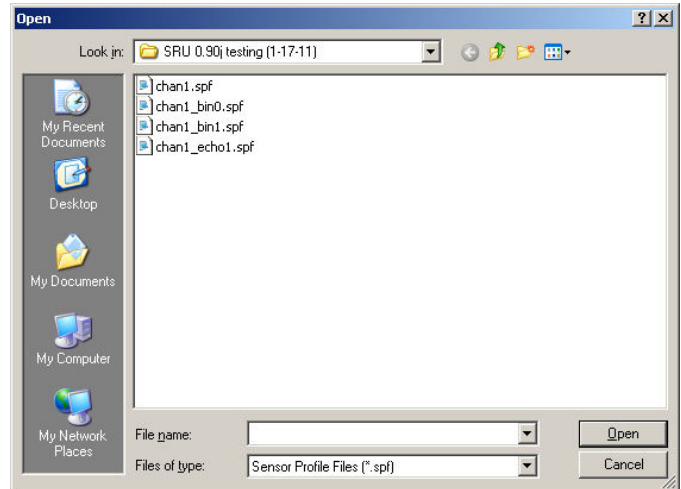


FIGURE 2.14 - SELECT .SPF FILE TO UPLOAD

8. To confirm that the upload was successful, connect to the DSA module through Telnet, HyperTerminal or another Ethernet communications venue. Send the command:

list mi X 0 69

(X = the sensor location the .spf file was uploaded to. Note that here a 0-15 channel numbering system is used. If a .spf file was uploaded to channel 1 through the Sensor Replacement Utility, 'list mi 0 0 69' would display the uploaded coefficients.)

APPENDIX A - SAMPLE SENSOR PROFILE FILE (.SPF)

```
SET TEMPM0 595.000000
SET TEMPB0 -14075.000000
SET ABS0 0
SET MAX0 0.210000
SET MIN0 -0.210000
SET NEGPTS0 4
INSERT 0 0 -0.200240 -15093 M
INSERT 0 0 -0.149860 -11376 M
INSERT 0 0 -0.100210 -7667 M
INSERT 0 0 -0.049350 -3897 M
INSERT 0 0 0.000000 -233 M
INSERT 0 0 0.049030 3401 M
INSERT 0 0 0.100280 7209 M
INSERT 0 0 0.150260 10907 M
INSERT 0 0 0.200420 14608 M
INSERT 5 0 -0.200140 -15066 M
INSERT 5 0 -0.150300 -11374 M
INSERT 5 0 -0.100320 -7667 M
INSERT 5 0 -0.049090 -3878 M
INSERT 5 0 0.000000 -230 M
INSERT 5 0 0.049610 3451 M
INSERT 5 0 0.099560 7142 M
INSERT 5 0 0.150160 10883 M
INSERT 5 0 0.200270 14573 M
INSERT 15 0 -0.200160 -14986 M
INSERT 15 0 -0.150210 -11293 M
INSERT 15 0 -0.099660 -7583 M
INSERT 15 0 -0.049790 -3892 M
INSERT 15 0 0.000000 -203 M
INSERT 15 0 0.049840 3482 M
INSERT 15 0 0.099920 7181 M
INSERT 15 0 0.150260 10880 M
INSERT 15 0 0.200420 14564 M
INSERT 25 0 -0.200090 -14912 M
INSERT 25 0 -0.150040 -11218 M
INSERT 25 0 -0.099860 -7532 M
INSERT 25 0 -0.050070 -3861 M
INSERT 25 0 0.000000 -170 M
INSERT 25 0 0.049810 3506 M
INSERT 25 0 0.100100 7203 M
INSERT 25 0 0.150120 10869 M
INSERT 25 0 0.200080 14540 M
INSERT 35 0 -0.200190 -14854 M
INSERT 35 0 -0.150240 -11183 M
INSERT 35 0 -0.099890 -7493 M
INSERT 35 0 -0.049850 -3811 M
INSERT 35 0 0.000000 -134 M
INSERT 35 0 0.049730 3535 M
INSERT 35 0 0.099900 7222 M
INSERT 35 0 0.150050 10895 M
INSERT 35 0 0.200080 14559 M
INSERT 45 0 -0.200200 -14813 M
INSERT 45 0 -0.150140 -11147 M
INSERT 45 0 -0.099850 -7449 M
INSERT 45 0 -0.049670 -3754 M
INSERT 45 0 0.000000 -96 M
INSERT 45 0 0.049680 3565 M
INSERT 45 0 0.099920 7266 M
INSERT 45 0 0.150160 10937 M
INSERT 45 0 0.200170 14604 M
INSERT 59 0 -0.200170 -14786 M
INSERT 59 0 -0.150130 -11111 M
INSERT 59 0 -0.099870 -7409 M
INSERT 59 0 -0.049620 -3712 M
INSERT 59 0 0.000000 -41 M
INSERT 59 0 0.049690 3634 M
INSERT 59 0 0.100140 7345 M
INSERT 59 0 0.150150 11016 M
INSERT 59 0 0.200190 14687 M
INSERT 64 0 -0.200270 -14772 M
INSERT 64 0 -0.150060 -11082 M
INSERT 64 0 -0.100060 -7396 M
INSERT 64 0 -0.049680 -3652 M
INSERT 64 0 0.000000 -1 M
INSERT 64 0 0.050290 3699 M
INSERT 64 0 0.099560 7343 M
INSERT 64 0 0.150400 11086 M
INSERT 64 0 0.200360 14756 M
INSERT 69 0 -0.200230 -14743 M
INSERT 69 0 -0.150640 -11066 M
INSERT 69 0 -0.100150 -7371 M
INSERT 69 0 -0.049910 -3657 M
INSERT 69 0 0.000000 37 M
INSERT 69 0 0.049990 3741 M
INSERT 69 0 0.099770 7412 M
INSERT 69 0 0.150460 11148 M
INSERT 69 0 0.200270 14807 M
```

APPENDIX B - SOFTWARE REVISION LOG

Version 1.00 - Initial software release. January 2011.

Version 1.01 - Updated to support ENCL, DSM and RAD products. December 2011.

<THIS PAGE INTENTIONALLY LEFT BLANK>

Scanivalve

**1722 N. MADSON ST.
LIBERTY LAKE, WA 99019**

**PHONE: 1-800-935-5151
1-509-891-9970
FAX: 1-509-891-9481**

**SCANCO@SCANIVALVE.COM
WWW.SCANIVALVE.COM**

**SENSOR REPLACEMENT UTILITY MANUAL
DECEMBER 5, 2011**